

Technical Data Sheet

Everguard Professional 1330 Masterflex Waterproofing

Product Code: 1330-10xx-xx

Most Recent Revision Date: 14 Mar 2023



Product Description

Everguard Professional 1330 Masterflex Waterproofing is a high quality water-based waterproof coating that can be used with or without a fiber mesh. Formulated for maximum exterior durability while maintaining its flexibility on new and previously coated surfaces (which have been suitably prepared).

Suitable for direct application on new plaster, concrete, brickwork (unglazed), metal roofs, tiled roofs, parapets and composition boarding. Areas that are typically subject to differing expansion rates should be coated in combination with fiber membrane (e.g. roof sheeting to be flashed to concrete structure).

Applications

Typical applications:

- Masonry - concrete, new plaster, brickwork, roof tiles.
- Metal roofs and sheeting.
- Composition boarding.
- Previously coated surfaces such as torch-on waterproofing that has been suitably prepared.

Benefits

- High exterior durability, maintaining water repellence and flexibility.
- Excellent adhesion - can be used on horizontal and vertical surfaces.
- Resistant to aging, cracking and chalking.
- Easy application (brush, roller and airless spray).
- Water-based.
- Low odour.
- Low-VOC.
- Lead-free.
- Formaldehyde-free.
- APEO-free.
- Easy clean-up with water.

Specification

Property	Unit	Value	Test Method/Standard
Viscosity at 20°C:	cP	1600 – 2300	Sheen Viscometer
Fineness of Grind:	Micron (μ)	< 10	Fineness of Grind Gauge
Specific Gravity:	g/cm ³	1.12 – 1.30	S.G. Cup
pH	pH scale	6 – 8	pH meter
Volume Solids	%	28 - 32	Based on DFT calculations
Spreading Rate	m ² /L	5 – 6	ASTM D344
Gloss	-	Semi-sheen	Visual
Shelf life:	Months	24	

Packaging

Standard Pack Sizes: 5L and 20L bucket

Pre-Application Information

Mixing:	Stir until homogenous with a manual mixing paddle or use drill fitted with paint mixing tool. Ensure paddle or mixing tool are clean.
Application Method:	Brush, roller or spray.
Gloss Level:	Reflective (Silver), Mid-sheen (all other colours).
Application Temperatures:	8 – 35°C
Thinners:	Clean water
Coverage:	5 – 6 m ² /L depending on surface porosity, when brush-applied. Note that thicker coats provide better resistance to elements. When applied with a fiber membrane a thicker first coat is required for proper saturation/seating the fiber mesh.
Fibre Membrane:	Apply a thick first coat and lay membrane while wet. Membrane should be completely saturated by underlying first coat. Apply second coat once first coat and membrane are dry. Ensure total coverage of membrane by second coat. Apply third coat once second is dry.
Drying Time:	1 – 2hrs @ 25°C
Recoating Time:	4hrs @ 25°C
Cleaning:	Use water. Remove as much product as possible from application tools/equipment immediately after use and before rinsing with water. A concentrated water-based cleaner such as STAG Grime Gremlin is very effective on tools/equipment.
Precautions:	Not for use as a metal primer. Use only on sound, porous masonry surfaces. Not suitable for friable cementitious surfaces. Do not paint if temperature is 8°C or less. Surfaces should contain maximum of 10% moisture. Do not apply to surfaces that will exceed 80°C.

Surface Preparation

Before applying Everguard Professional 1330 Masterflex Waterproofing, surfaces must be:

- free of efflorescence and salts, organic matter (fungus, lichen, etc)
- dry with a maximum of 10% moisture
- clean and free of flaking paint, dirt and oil
- concrete and plaster surfaces should be sound with no friable sections. Everguard Professional 1310 Plasterflex can be used to seal minor surface defects and hairline cracks.
-

New work:

Concrete, Cement Plaster, Masonry tiles, Brickwork:

- New plaster should have a maximum moisture content of 10%. As a guideline, new plaster should be allowed to dry for a minimum of 7 days per 5mm of plaster.
- Rough and very porous surfaces should be primed with a single coat of Everguard Professional 1310 Plasterflex Plaster Sealer.
- Allow to dry for 3 – 4 hours minimum before applying the second coat, and if applicable, third coat.

Metal roofs and sheeting:

- Ensure all rust is removed to expose bare metal.
- Apply a single coat of Everguard Professional 1311 Etch Primer before applying 2 coats of Everguard Professional 1330 Masterflex Waterproofing. Allow to dry for 5 hours between coats.

Composite Boarding:

- No Primer required except on bare metal areas e.g. nail heads, which should be spot-primed with Everguard Professional 1311 Etch Primer.
- Apply 2 to 3 coats of Everguard Professional 1330 Masterflex Waterproofing. Allow to dry for 4 hours minimum between coats.

Previously Painted Surfaces:

- Ensure all surfaces are clean and free of flaking paint, dirt, efflorescence / salts, and organic matter (fungus, lichen, etc).
 - Ensure all masonry surfaces are sound with no friable sections. Everguard Professional 1310 Plasterflex can be used to seal minor surface defects and hairline cracks.
 - If applying to existing Bituminous Waterproofing Surfaces, follow the cleaning instruction above. Prime substrate/s with a single coat of Everguard Professional 1315 Bituminous Surface Primer.
 - All cleaned and exposed areas can be treated as new surfaces above.
-

Safety, Storage and Disposal

Safety:

- Ensure good ventilation during application and drying.
- **Keep out of reach of children!**
- Harmful if swallowed. If ingested, get medical help immediately and refer to SDS.
- Avoid contact with skin and eyes.
- If contact with skin occurs, wash off immediately with soap and water. Should adverse reaction occur, seek medical advice.
- If in contact with eyes, rinse immediately and thoroughly with plenty of clean water. Get medical assistance.
- Refer to SDS for hazard warnings and information on safe handling / use / transport / storage / disposal / emergency.

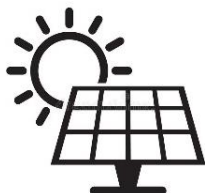
Storage:

- Unopened and correctly resealed containers must be kept out of direct sunlight and in dry conditions.
- **Store out of reach of children!**
- Unopened and correctly stored containers have a shelf life of 24 months.

Disposal:

- Do not dispose in drains, sewers or waterways.
- Dispose of waste contents and empty containers in accordance with local laws.
- **Keep used / empty containers away from children!**

Please refer to the SDS for the most current 'Handling and Storage' information.



The **Everguard®** range of products are manufactured in Johannesburg (South Africa) in a factory equipped with solar panels. 75% of the of the total energy consumption of factory is supplied by the sun (April 2023 consumption data).

Terms of Use: This information is based on our present state of knowledge and is intended to provide general notes on our range of products and their uses. It should not be construed as a guarantee of specific properties of the products described, or the suitability for a particular application. If further information is required, please contact Liquid Colours.

The quality of our products undergoes specific and relevant tests related to their basic applications and end uses. The quality of our products is guaranteed under our General Conditions of Sale. Customers must independently determine the suitability for their intended products, uses or process. Liquid Colours makes no representation or warranty, expressed or implied, including merchantability or fitness for a particular use, regarding our products.

----- end document -----